

The logo consists of the lowercase letters 'i', 'S', and 'i' in a white, sans-serif font. The 'S' is significantly larger than the 'i's and is positioned between them. The logo is centered within a circular graphic element.

INSIGHTFUL VISION

# iSi ID



# What do we do?



**Satellite Services**



**Intelligence as a Service**



**Analytical Solutions**



**Ground Segment**



**Space Segment**



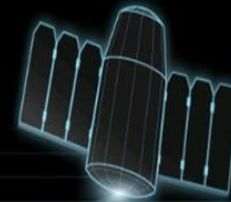
**Education & Training**



# Ground Segment



DPS State  
ROUTINE



CNS State  
CRUISE MGM (RWA)

**Actuators**

HEU

Heater   DAY

LV

Counters    
HT LT

RWA

**DPS**

DPS

Memory

Recovery Counter

Clock Src.

SEU

**S-Comm**

TLM Type

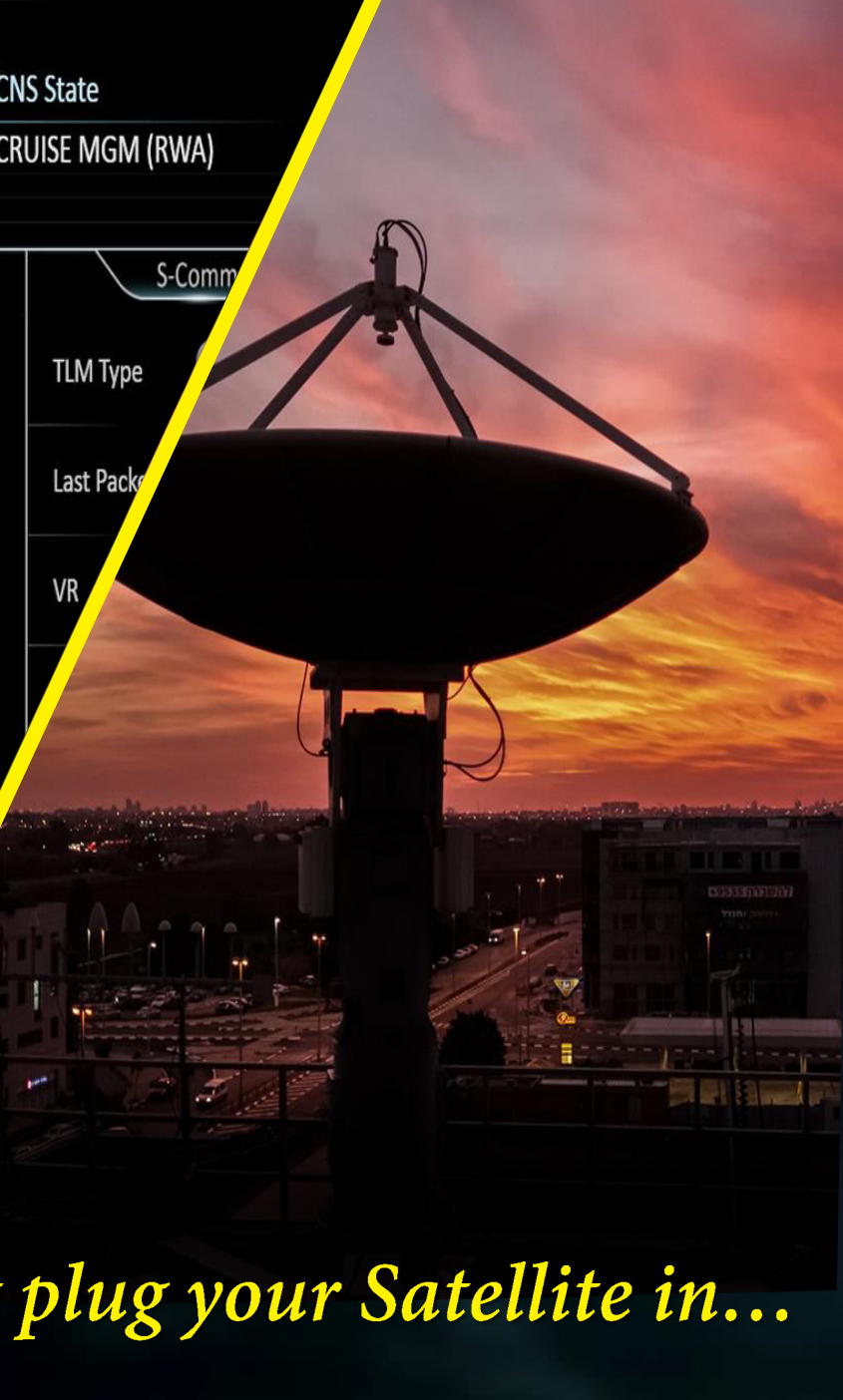
Last Packet

VR

**TLM Events**

DPS Time	UTC Time	Event
802826712	2016-12-13 23:49:23.800	
802827112	2016-12-13 23:49:33.800	
802827894	2016-12-13 23:49:53.350	
802827938	2016-12-13 23:49:54.450	
802827938	2016-12-13 23:49:54.450	
802832774	2016-12-13 23:51:55	
802833391	2016-12-13 23:52:7	
802833391	2016-12-13 23:57	
802833391	2016-12-13 23:57	
802833391	2016-12-13 23:57	
802833391	2016-12-13 23:57	

*Just plug your Satellite in...*



# ISI Innovation

- Activity Recognition
- Behavior Analysis & Prediction
- Multi Agent Systems
- Computer Vision
- Optimization Problems
- Data Mining

*Solving the puzzle*

# Intelligence as a Service



Analysis center

*Immediate answer to your needs*





isi

GEO ECONOMIC  
INTELLIGENCE

# Port Headland – FMG Anderson Point Stockyard

- **ISI is continuously monitoring major bulk commodities sites**
- **Using advanced computer vision algorithms, ISI provides precise measurements of each stockpile tonnage**
- **Periodical monitoring provides accurate inventory levels per company in each site**



# Iron Ore Inventory - Port Headland, Australia



FMG Anderson Point Stockyard

Port headland FMG Iron Ore Inventory (Metric Tons)				
Stockpile #	Thu, April 13	Mon, April 3	Δ W\W	% Δ W\W
1A	181,930	148,975	32,955	18%
2A	28,218	84,738	-56,520	-200%
3A	-	205,923	-205,923	-
4A	169,063	142,695	26,368	16%
5A	-	-	0	-
6A	89,360	159,628	-70,268	-79%
7A	-	-	0	-
8A	-	-	0	-
9A	-	-	0	-
10A	23,750	20,493	3,258	14%
11A	-	-	0	-
12A	92,023	98,678	-6,655	-7%
13A	112,880	-	112,880	100%
14A	180,218	153,715	26,503	15%
15A	177,178	12,575	164,603	93%
16A	166,995	39,128	127,868	77%
17A	34,900	167,965	-133,065	-381%
18A	226,353	-	226,353	100%
19A	-	-	0	-
20A	-	-	0	-
21A	65,760	-	65,760	100%
22A	-	-	0	-
23A	-	-	0	-
24A	16,738	-	16,738	100%
25A	18,633	-	18,633	100%
26A	214,758	115,895	98,863	46%
27A	195,813	52,528	143,285	73%
28A	45,375	59,330	-13,955	-31%
29A	45,585	142,820	-97,235	-213%
30A	26,545	12,678	13,868	52%
<b>Total</b>	<b>2,112,070</b>	<b>1,617,760</b>	<b>494,310</b>	<b>23%</b>

# Iron Ore Traffic Monitoring - Port Headland, Australia



Port headland FMG Anderson Point Iron Ore Export Apr.3 – Apr.13				
Berth Nr.	Ship Name	Destination	Dst. Port	Tonnage
Berth 1	Indigo Hope	China	Kemen	251,019
	FPMC B Nature	China	Caofeidian	209,817
	Ocean China	China	Tangshan	228,915
	FMG Nicola	China	Xingang	260,840
	Total Berth 1			950,591
Berth 2	M. Oldendorff	China	Qingdao	208,086
	Indian Friendship	China	Zhanjiang	180,450
	FPMC B. Image	China	Qingdao	206,699
	Ocean World	China	Lanshan	228,800
	FMG Grace	China	Qingdao	260,000
	FPMC B Kingdom	China	Tangshan	206,500
	Ocean Atlantic	China	Xingang	250,000
	Total Berth 2			1,540,535
Berth 3	C H S Cosmos	China	Rizhao	174,090
	Madeira	China	Caofeidian	177,926
	Mineral Shikoku	China	Tangshan	206,312
	Ocean Compass	China	Luoqing	180,200
	PSU First	China	Caofeidian	210,000
	Total Berth 3			948,528
Berth 4	CSB Hope	China	Qingdao	229,008
	CDBL Era	China	Caofeidian	175,911
	Pompano	China	Caofeidian	174,240
	Vathy	China	Caofeidian	229,186
	Qing May	China	Dongjiakou	206,117
	Total Berth 4			1,014,462
Berth 5	Jin Da Hai	China	Qingdao	207,811
	May Oldendorff	China	Qingdao	206,108
	China Fortune	China	Caofeidian	206,061
	Capricorn Sigma	China	Huanghua	181,305
	Total Berth 5			801,285
Total		494,310	23%	5,255,401

# Data Integration

FMG Anderson Point Stockyard

Apr. 3 – Apr. 13:  
 $\Delta$  494,310 Tons, +23%

Port headland FMG Iron Ore Inventory (Metric Tons)				
Stockpile #	Thu, April 13	Mon, April 3	$\Delta$ WW	% $\Delta$ WW
1A	181,930	148,975	32,955	18%
2A	28,218	84,738	-56,520	-200%
3A	-	205,923	-205,923	-
4A	169,063	142,695	26,368	16%
5A	-	-	0	-
6A	89,360	159,628	-70,268	-79%
7A	-	-	0	-
8A	-	-	0	-
9A	-	-	0	-
10A	23,750	20,493	3,258	14%
11A	-	-	0	-
12A	92,023	98,678	-6,655	-7%
13A	112,880	-	112,880	100%
14A	180,218	153,715	26,503	15%
15A	177,178	12,575	164,603	93%
16A	166,995	39,128	127,868	77%
17A	34,900	167,965	-133,065	-381%
18A	226,353	-	226,353	100%
19A	-	-	0	-
20A	-	-	0	-
21A	65,760	-	65,760	100%
22A	-	-	0	-
23A	-	-	0	-
24A	16,738	-	16,738	100%
25A	18,633	-	18,633	100%
26A	214,758	115,895	98,863	46%
27A	195,813	52,528	143,285	73%
28A	45,375	59,330	-13,955	-31%
29A	45,585	142,820	-97,235	-213%
30A	26,545	12,678	13,868	52%
Total	2,112,070	1,617,760	494,310	23%

FMG Anderson Point Port

Apr. 3 – Apr. 13:  
 Exported - 5,255,401 Tons

Port headland FMG Anderson Point Iron Ore Export Apr.3 – Apr.13				
Berth Nr.	Ship Name	Destination	Dst. Port	Tonnage
Berth 1	Indigo Hope	China	Kemen	251,019
	FPMC B Nature	China	Caofeidian	209,817
	Ocean China	China	Tangshan	228,915
	FMG Nicola	China	Xingang	260,840
Total Berth 1				950,591
Berth 2	M. Oldendorff	China	Qingdao	208,086
	Indian Friendship	China	Zhanjiang	180,450
	FPMC B. Image	China	Qingdao	206,699
	Ocean World	China	Lanshan	228,800
	FMG Grace	China	Qingdao	260,000
	FPMC B Kingdom	China	Tangshan	206,500
Ocean Atlantic	China	Xingang	250,000	
Total Berth 2				1,540,535
Berth 3	C. H. S. Cosmos	China	Rizhao	174,090
	Madeira	China	Caofeidian	177,926
	Mineral Shikoku	China	Tangshan	206,312
	Ocean Compass	China	Luojing	180,200
	PSU First	China	Caofeidian	210,000
Total Berth 3				948,528
Berth 4	CSB Hope	China	Qingdao	229,008
	CDBL Era	China	Caofeidian	175,911
	Pompano	China	Caofeidian	174,240
	Vathy	China	Caofeidian	229,186
	Qing May	China	Dongjiakou	206,117
Total Berth 4				1,014,462
Berth 5	Jin Da Hai	China	Qingdao	207,811
	May Oldendorff	China	Qingdao	206,108
	China Fortune	China	Caofeidian	206,061
	Capricorn Sigma	China	Huanghua	181,305
Total Berth 5				801,285
Total			494,310	23%
				5,255,401

# Case Study – Adjusting The Right Cadence

- Tracking Coal & Iron Ore Inventory using patented Volumetric Measurement techniques.
- Ensuring required cadence through a combination of EO Stereoscopic measurement with SAR Interferometry.

## Iron Ore Inventory – Tangshan Port, China *2 Months – 15 Data points*



INSIGHTFUL VISION

isi

# Agrinsight

AgTech in the New  
Space Era

[Back to Portfolio](#)



Satellite  
& GCS



Intelligence  
as a Service



Maritime  
Awareness



Commercial  
Applications



New  
Space



# iSi AgrInsight

## Geographic DeciSion Support web service for farmers and Ag-consultants

- Low-cost hi-frequency satellite imagery browser for monitoring cropping systems
- On-the-fly image processing
- Ground data uploading module
- Soil composition and nutrients analysis
- Fertilization deciSion support system

Fazenda Hermano, Mato Grosso, Brazil

April 24, 2016

This NDVI analysis shows the density of photosynthetic area

**Crop analysis mode**

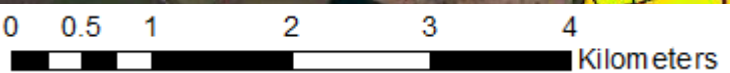
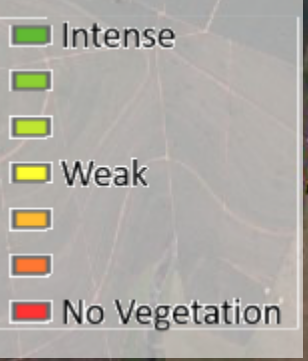
Farm Level Vegetative Analysis

⚡ Current NDVI

Δ Delta NDVI


✍ Location analysis

Map Notes  Map Data

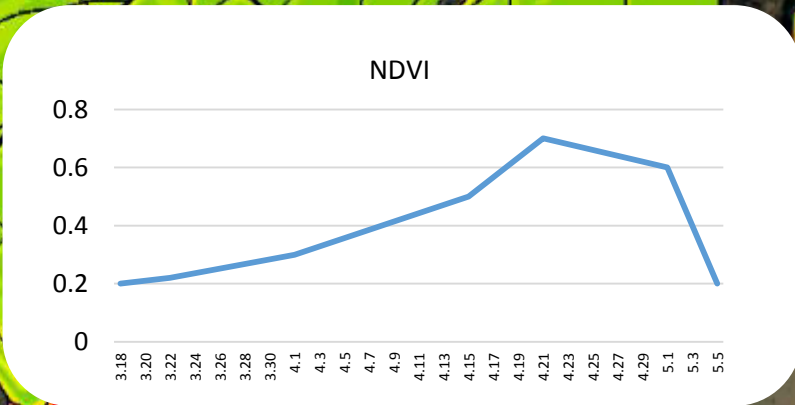


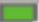
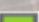


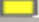
← Back to Portfolio




# Fazenda Hermano, Mato Grosso, Brazil

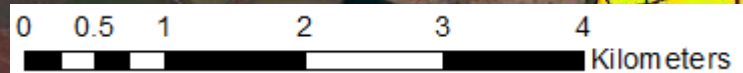
 April 24, 2016

Delineate an area to see how it has changed over time



**Intense**  
 Intense  
 Weak  
**Weak**  
 Weak  
 No Vegetation  
**No Vegetation**  
 No Vegetation

Farm Level  
 Vegetative Analysis  
 Current NDVI  
 Delta NDVI  
  
 **Location analysis**  
 Map Notes  
 Map Data



[← Back to Portfolio](#)



# Disaster Management



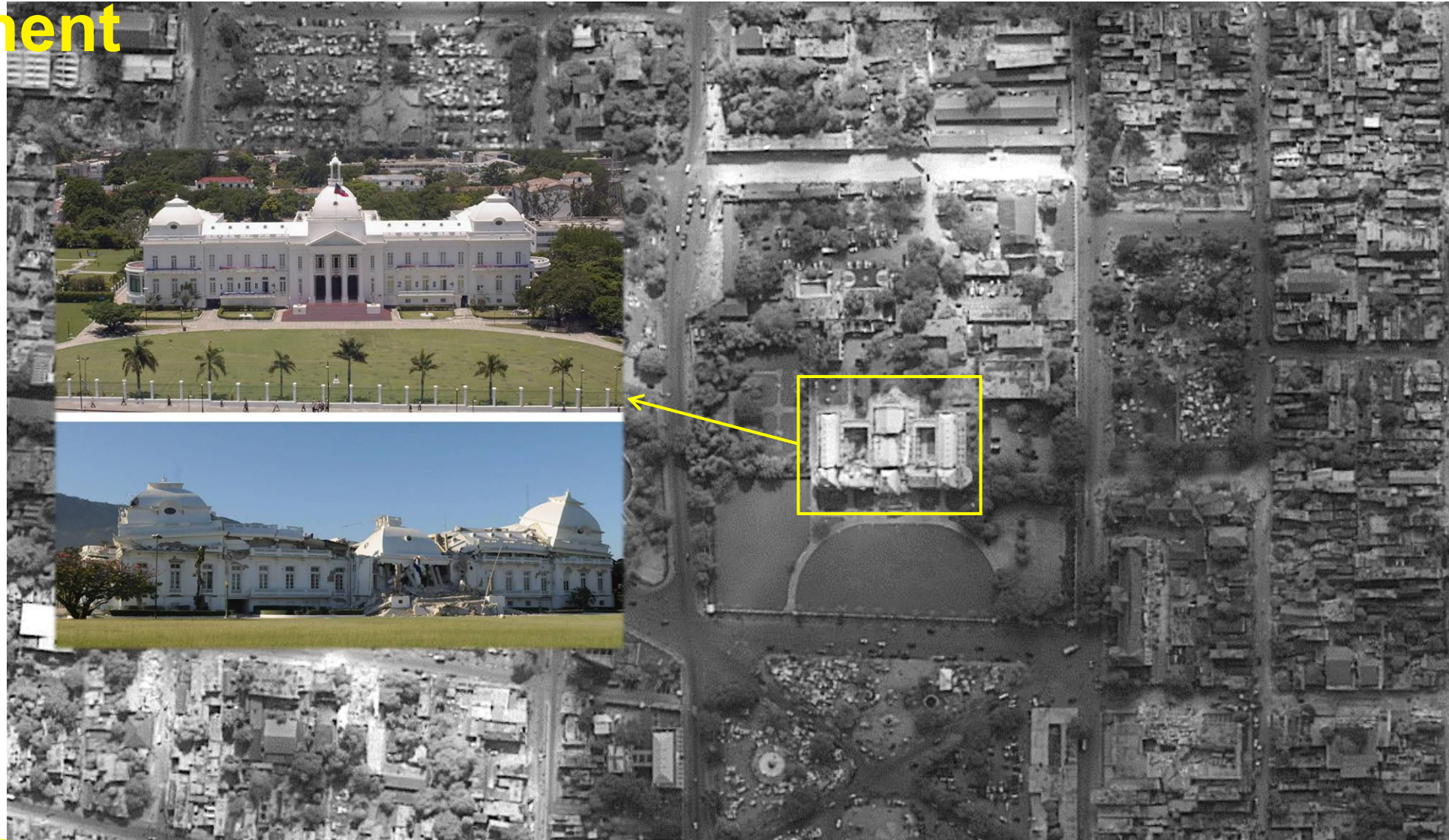
# Flooding



# Earthquake



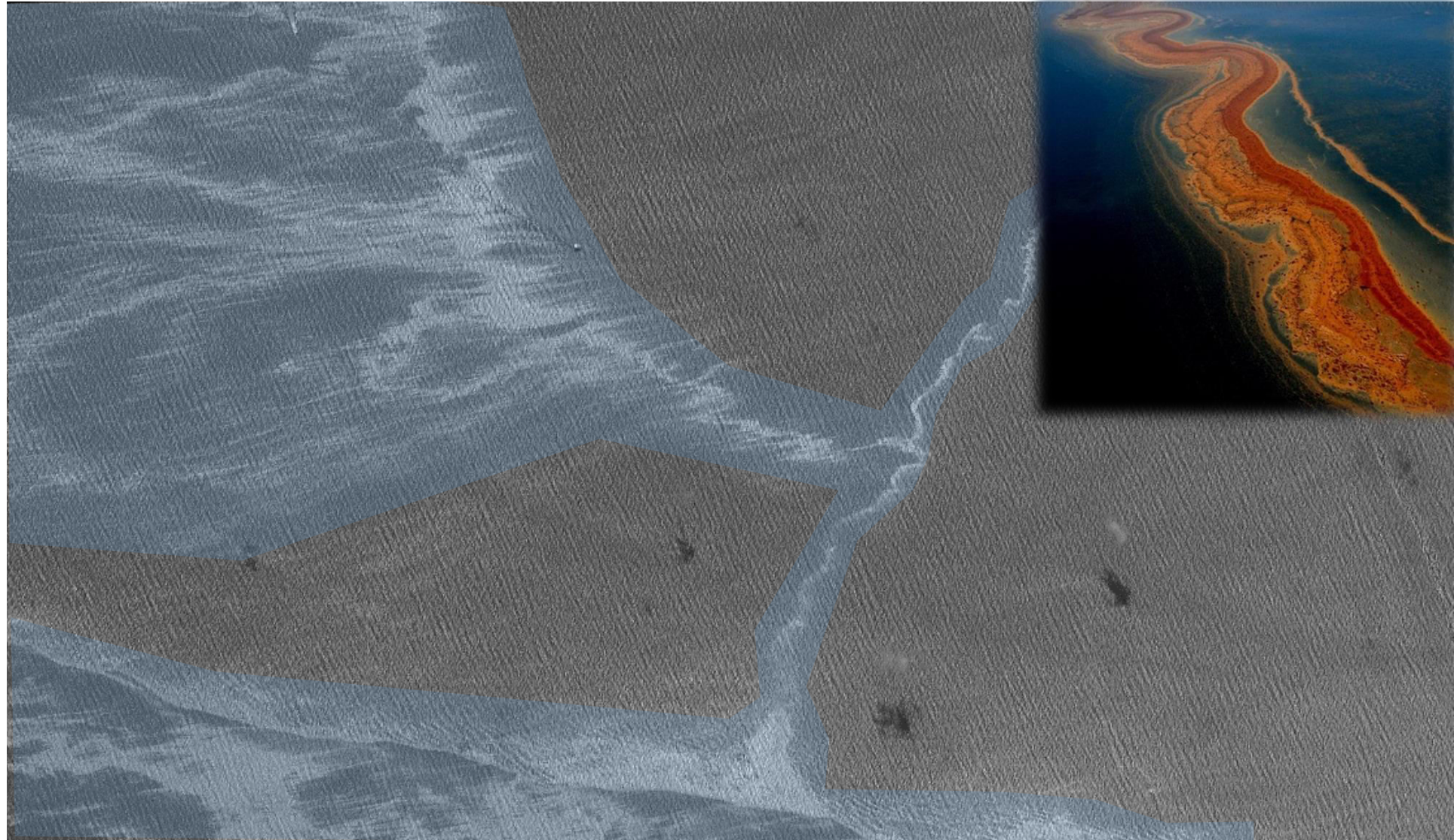
# Damage Assessment



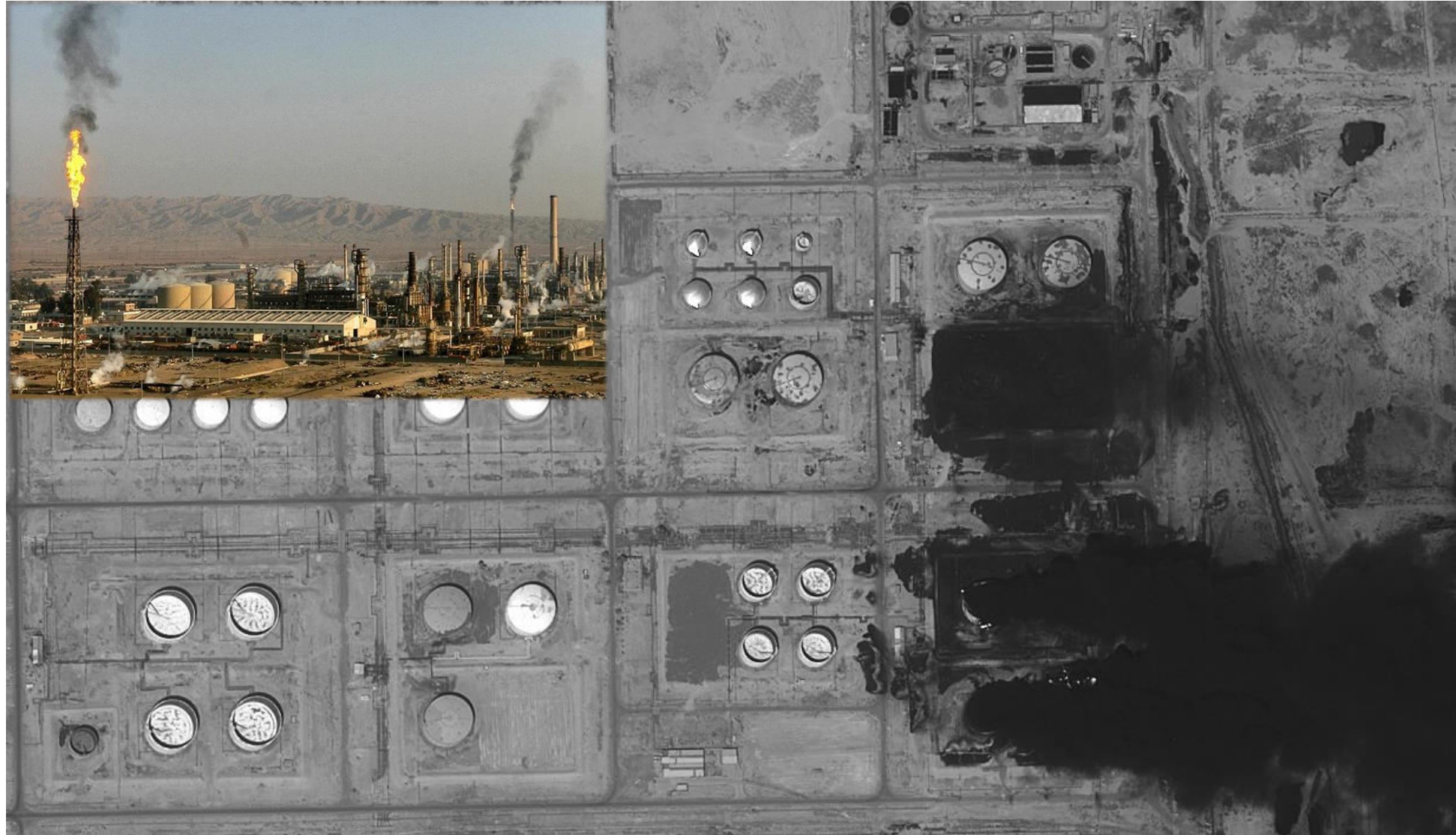
# Supporting relief efforts



# Oil Spill - Mexico



# Baiji Refinery Iraq



# Tianjin Port, China





The background is a satellite image of Earth, showing the African continent and surrounding oceans. Overlaid on this is a graphic of several concentric yellow circles. A yellow banner is positioned at the top of the innermost circle, containing the text 'INSIGHTFUL VISION'. In the center of the circles, the text 'Thank You' is written in white.

**Thank You**

**INSIGHTFUL VISION**